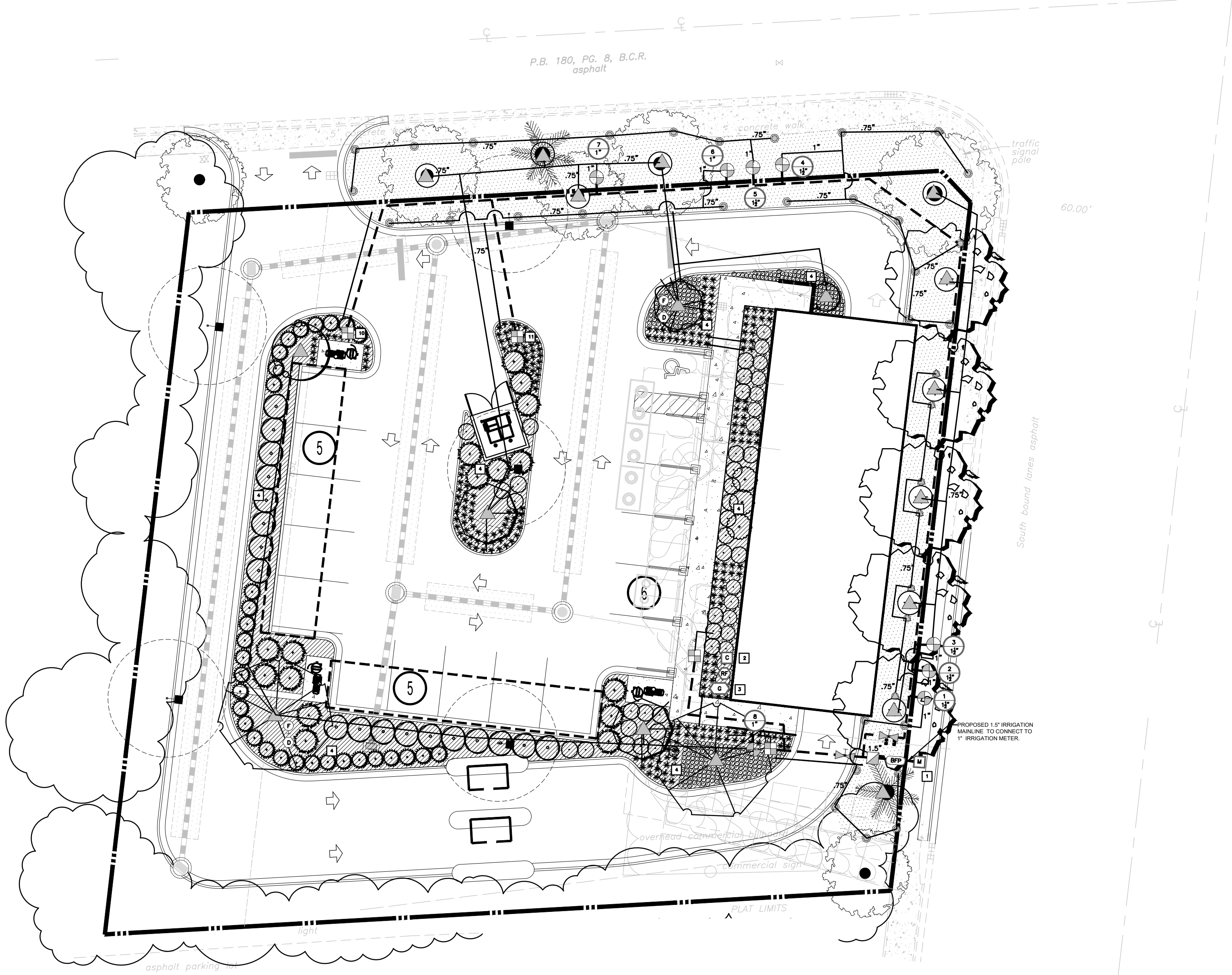


IRRIGATION NOTES:

1. CONTRACTOR SHALL VERIFY THAT AVAILABLE WATER PRESSURE IS ADEQUATE FOR IRRIGATION SYSTEM. CONTRACTOR SHALL VERIFY IN FIELD PRIOR TO BEGINNING CONSTRUCTION. ANY DISCREPANCIES SHALL BE REPORTED TO THE LANDSCAPE ARCHITECT OR OWNERS REPRESENTATIVE.
2. CONTRACTOR TO PROVIDE IRRIGATION LAYOUT DESIGN TO ARCHITECT FOR APPROVAL. SEE IRRIGATION REQUIREMENTS PARAGRAPH.
3. CONTRACTOR IS RESPONSIBLE FOR INSTALLATION OF WATER METERS, BACKFLOW PREVENTERS, VALVES, ELECTRIC WIRING FOR THE IRRIGATION SYSTEM, ALL SLEEVING, ALL FITTINGS, ADAPTERS, ETC. TO COMPLETE THE IRRIGATION SYSTEM.
4. CONTRACTOR SHALL ADJUST ALL HEADS IN FIELD TO INSURE MAXIMUM COVERAGE, ELIMINATE OVERTHROW ONTO PAVED AREAS, BUILDING AND WALL SURFACES. (LOCATE HEADS 3" CLEAR OF ALL HARDSCAPE SURFACES.) ALL AUTOMATIC VALVES SHALL BE INSTALLED IN A VALVE BOX AS SPECIFIED. COORDINATE SLEEVES WITH GENERAL CONTRACTOR.
5. CONTRACTOR SHALL COORDINATE PIPING LAYOUT WITH LANDSCAPE PLAN TO INSURE PIPES DO NOT INTERFERE WITH ROOT BALLS OF TREES OR ROWS OF SHRUBS. REPORT ANY DISCREPANCIES TO THE LANDSCAPE ARCHITECT OR OWNERS REPRESENTATIVE.
6. CONTRACTOR SHALL VERIFY THAT ALL PERTINENT LOCAL AND STATE CODES ARE BEING OBSERVED.
7. CONTRACTOR TO PROVIDE THRUST BLOCKS ON MAIN LINE AT ALL BENDS AND TURNS.
8. IRRIGATE ALL TREES WITHIN PROJECT LIMITS.
9. PROVIDE GATE VALVES AT DOWNSTREAM SIDE OF BACKFLOW AND AT HYDRAULIC CONTROLLERS.



IRRIGATION SCHEDULE:

SYMBOL	DESCRIPTION
1	IRRIGATION SYSTEM WATER SOURCE TO BE A 1.5" SERVICE LINE TO A 1" METER AND 1" RPZ. SYSTEM REQUIREMENTS ARE 48 GPM AT A STATIC PRESSURE OF 90 PSI. CONTRACTOR TO VERIFY FLOW AND PRESSURE AND PROVIDE DESIGNER WITH RESULTS PRIOR TO CONSTRUCTION.
2	COORDINATE THE EXACT LOCATION OF CONTROLLER WITH OWNERS REPRESENTATIVE. PROVIDE 120V 20 AMP POWER TO THE CONTROLLER FROM A DEDICATED CIRCUIT. INSTALL CONTROLLER AS PER PLAN NOTES, DETAILS AND MANUFACTURES INSTRUCTIONS.
3	COORDINATE THE EXACT LOCATION OF THE RAIN FREEZE SENSOR WITH OWNERS REPRESENTATIVE. INSTALL AND PROGRAM PER PLAN DETAILS AND MANUFACTURER'S SPECIFICATIONS.
4	INSTALL SUB-SURFACE DRIP TUBING 3" BELOW FINISHED GRADE.
5	PIPE LOCATION IS DIAGMMATIC AND ILLUSTRATED AS SUCH FOR DRAWING CLARITY. CONTRACTOR TO INSTALL ALL PIPING, WIRING, VALVES, HEADS, ETC. PER DRAWING DETAILS AND NOTES AND PER MANUFACTURE'S SPECIFICATIONS AND INDUSTRY STANDARDS.
	HUNTER PROS--06--PRS30--CV 5' CENTER STRIP SPRAY TURF SPRAY, 30 PSI REGULATED 6.0" POP--UP. WITH FACTORY INSTALLED DRAIN CHECK VALE. CO--MOLDED WIPER SEAL WITH UV RESISTANT MATERIAL.
	HUNTER PROS--06--PRS30--CV 12H ADJUSTABLE ARCH TURF SPRAY, 30 PSI REGULATED 6.0" POP--UP WITH FACTORY INSTALLED DRAIN CHECK VALVE. CO--MOLDED WIPER SEAL WITH UV RESISTANT MATERIAL.
	<del>HUNTER 4H--6" POP-UP WITH FACTORY INSTALLED CHECK VALVE, PRESSURE REGULATED TO 40 PSI, SHORT RADIUS MICRO SPRAY NOZZLE.</del>
	HUNTER PCB--25 0.25 GPM FULL CIRCLE BUBBLER WITH FACTORY INSTALLED CHECK VALVE, PRESSURE REGULATED TO 40 PSI.
	<del>HUNTER PRP--04--PR0 TURF ROTOR, 4" POP-UP, ADJUSTABLE TO FULL CIRCLE, PRESSURE REGULATING BODY.</del>
	RAINBIRD X CZ--100--PRB--COM WIDE FLOW DRIP CONTROL KIT FOR COMMERCIAL APPLICATIONS. 1" BALL VALVE WITH 1" PESB VALVE AND 1" PRESSURE REGULATING 40 PSI QUICK--CHECK BASKET FILTER. 0.3 GPM TO 20 GPM.
	FLUSH VALVE. HUNTER INDUSTRIES PLD--FV INSTALLED AS PER PLAN DETAIL.
	HUNTER ECO-ID. 3/4" FPT CONNECTION WITH 12--60 PSI OPERATING PRESSURE. SPECIFY WITH HUNTER SJ SWING JOINT.
	RAIN BIRD PEB 1", 1--1/2", 2" PLASTIC INDUSTRIAL VALVES. LOW FLOW OPERATING CAPABILITY, GLOBE CONFIGURATION.
	HUNTER HQ--44LRC--AW QUICK COUPLER VALVE, YELLOW RUBBER LOCKING COVER, RED BRASS AND STAINLESS STEEL WITH 1" NPT INLET, 2--PIECE BODY. ACME KEY WITH ANTI--ROTATION WINGS.
	NIBCO T--113 CLASS 125 BRONZE GATE SHUT OFF VALVE WITH WHEEL HANDLE, SAME SIZE AS MAINLINE PIPE DIAMETER AT VALVE LOCATION. SIZE RANGE --1/4" -- 3".
	REDUCED PRESSURE BACKFLOW PREVENTER PER CIVIL UTILITY PLANS.
	RAIN BIRD ESPLX/M--LX/MMPED FLOW SENSING TWO--WIRE DECODER COMMERCIAL CONTROLLER. 24 STATIONS (EXPANDABLE TO 48 STATIONS). UV--RESISTANT, OUTDOOR RATED, POWDER--COATED METAL PEDESTAL CASE.
	RAIN BIRD WR2--RFS WIRELESS RAIN/FREEZE SENSOR.
	2--WIRE GROUNDING POINT. INSTALL PER MANUFACTURE'S SPECIFICATIONS.
	WATER METER PER CIVIL UTILITY PLANS.
	IRRIGATION LATERAL LINE: PVC CLASS 200 SDR 21, MINIMUM SIZE 3/4".
	IRRIGATION MAINLINE: PVC CLASS 200 SDR 21.
	PIPE SLEEVE: 2" PVC SCHEDULE 40.
	VALVE/ZONE NUMBER VALVE SIZE

This drawing and the design shown is the property of Dennis C. Terry who reserves his common-law Copyright and other property rights in these plans. The reproduction, copying, changing or any other use of this drawing are prohibited. The designs or ideas contained within are not to be reproduced whatsoever, nor are they to be assigned to any third party without first obtaining the express written permission of Dennis C. Terry. Any infringements will be subject to legal action. © Copyright 2025

PROJECT NUMBER 25-0610

DENNIS TERRY

DESIGN, INC. P. A.

LANDSCAPE ARCHITECTURE

CONSTRUCTION MANAGEMENT & ENVIRONMENTAL PLANNING

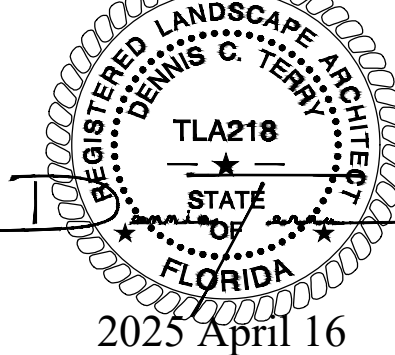
demisterrydesign@gmail.com 704-202-8160 3302 Belaire Road, Mooresboro, NC 28114

Site Planning ♦ Rezoning ♦ Permitting ♦ Residential ♦ Commercial

Landscape Plan

Edge Carwash  
5391 N. Federal Highway  
Pompano Beach, FL

CONSTRUCTION DOCUMENTS



Dennis C. Terry  
Digitally signed by Dennis c. Terry  
Date: 2025.05.01

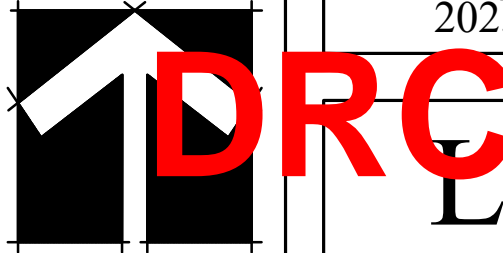
CAUTION!!!  
The locations and elevations of existing underground utilities as shown on this drawing are only APPROXIMATE. No guarantee is either expressed or implied as to the completeness or accuracy thereof. The contractor shall be exclusively responsible for determining the exact utility locations and elevations prior to the start of construction.



GRAPHIC SCALE



( IN FEET )  
1 inch = 20 ft.



L2.00